



EXPLORING THE WORLD AROUND US: USING TECHNOLOGY TO BUILD CONNECTIONS

**MICDS
ST. LOUIS, MO
JUNE 18-20**

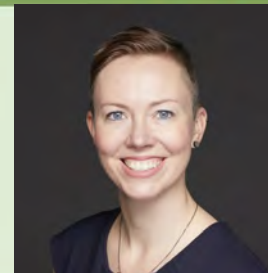


The 2019 Sustainability Institute for Educators will focus on the intersection of exploration, place, and sustainability. Using technology as a vehicle, educators will investigate local and global connections—all from their own classroom, learning space, or schoolyard.

The cost of the 3-day institute is \$150. Registration includes full programming, access to SIE resources, and breakfasts and lunches.

**KEYNOTE SPEAKER:
PEG KEINER**

Additional speaker details, scholarship & graduate credit information, and registration forms can be found online at webster.edu/SIE



2019 National Geographic Education Fellow, Director of Innovation at GEMS World Academy in Chicago



ATTENDEES WILL:

- ▶ **Be inspired by an energizing keynote** on using technology to investigate, communicate, educate, and innovate as routes to connect to a larger global movement of sustainability.
- ▶ **Learn about BiomeSTL: Biodiversity of Metropolitan St. Louis**, a regional biodiversity vision, atlas, and action plan. Part ecological data-directory, species inventory, best practices guide and aspirational plan for a bi-state region connected by nature, BiomeSTL is also, at its core, a citizen science and stewardship project.
- ▶ **Use iNaturalist** to explore and share your observations from the natural world.
- ▶ **Practice Digital Storytelling** to communicate aspects of the **Rainbow of Sustainability:** Interconnectedness, Systems Thinking, Global Citizenship, Cycles, Importance of Place, Respect for Limits, and Social Justice.
- ▶ **Bring exploration into your classroom** through **National Geographic Explorer Classroom** and help students develop an **Explorer Mindset**.
- ▶ **Explore Data Visualization** tools.
- ▶ **Engage in electronics disassembly** and discuss e-waste.
- ▶ **Learn more about Green Ribbon Schools** recognition – what it entails and how to apply.
- ▶ **Gather resources** at the **Tech & Resource Fair**.
- ▶ **Reflect on the knowledge and experiences** gained at the conference and how you might **apply these to your life and work**.
- ▶ **Enjoy delicious, sustainable meals** throughout the conference and **develop lasting connections** with fellow attendees.

REGISTER NOW
WEBSTER.EDU/SIE