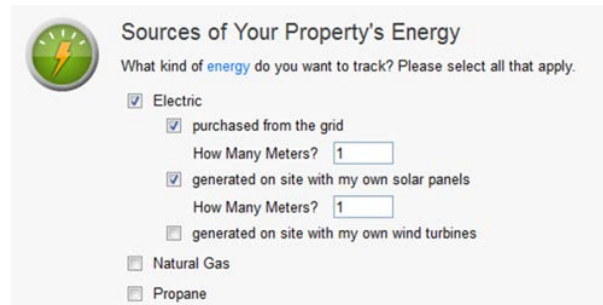


How to Enter Solar Energy Data in ENERGY STAR

How Do I Enter Onsite Green Power (Solar/Wind)? Part 1- Create Meters

To enter onsite green power (your solar panels/wind turbine) you need two different electric meters:

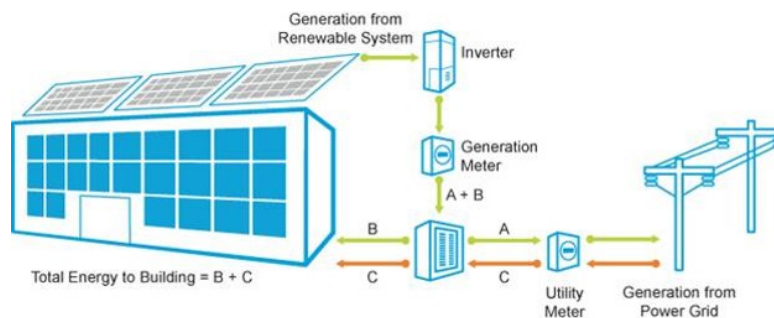
- One meter for your grid electricity: Any energy the building uses that physically comes from the grid should be entered here as grid electricity. **Do not simply enter a “net” meter**, which only shows the difference between the energy you import from the grid and the green power you export back to the grid.
- One meter for your onsite green power: This will track all of the electricity generated by your solar or wind system. You may generate more energy than you can use, so you will enter **both the energy that you generate and the energy that you export back to the grid.**



How Do I Enter Onsite Green Power (Solar/Wind)? Part 2 - Enter Data

Make sure you enter A, B, and C from the diagram below.

- For your Onsite Green Power Meter (solar panel meter):
 - **Energy Used On Site** - This is the energy that you generated from your solar (or wind) system and used in your building. In the diagram below, it is "B."
 - **Energy Exported Offsite** - This is the energy that you exported to the grid. In the diagram below, this is "A."
 - **Estimation** - Y/N whether you've entered an estimated value.
 - **REC ownership** - Do you own the environmental benefit of this "green power?"
- For your Electric Grid Meter:
 - **Electric Grid Energy** - This is the energy that you got directly from the grid. In the diagram, this is "C."



How Do I Enter Onsite Green Power (Solar/Wind)? Part 3 - Net-Metering

If you receive only a net-metered bill from your utility, **meaning your bill only shows the difference between the energy you imported from the grid minus the energy you exported** ($C - A$ in the diagram above), then you'll need to calculate the values for A, B, and C below using your bill and your organization's internal records.

As explained in Part 2, three values are required if you have onsite green power:

- A: The energy you generated onsite and exported to the grid
- B: The energy you generated onsite and used onsite
- C: The energy you purchased from the grid

If you have a net metering setup, you may not have access to A, B, and C. But, you may have access to:

- G (Generated): Total onsite energy generated, $G = A + B$
- N (Net): Total net energy from the grid, $N = C - A$

Internal Solar Panel Data Log

Total Amount Produced this month: 1,000 kWh

Value G = A+B

ACME Utilities

Account Number 12345678

Account Summary

Energy exported by customer: 50kWh

Net energy supplied by ACME Utilities: 25 kWh

Value A

Value N (C-A)

Value A: The energy you generated onsite and exported to the grid. Get this value from your utility bill (or from your organization’s data logs). In this example, the value is **50 kWh** and comes from the utility bill.

Value B: The energy you generated onsite and used onsite. Take value G (Generated) that you obtained from onsite measurements of energy production (in this case 1,000 kWh) and subtract A (50 kWh), then enter the result in the “Energy Used Onsite” column of your onsite meter, as shown below (950 kWh).

Value C: The energy you purchased from the grid. Take value N from your utility bill (25 kWh), and add A (50 kWh)=total amount of energy used that was physically supplied by the grid (75 kWh). Input this value in your Electric Grid meter.

▼ Electric Solar Meter [Edit](#)

Start Date	End Date	Energy Used On Site kWh (thousand Watt-hours)	Energy Exported Offsite kWh (thousand Watt-hours)	Estimation	REC Ownership
<input type="checkbox"/>		950	50	<input type="checkbox"/>	Owned <input type="text" value="Owned"/>

▼ Electric Grid Meter [Edit](#)

Start Date	End Date	Usage kWh (thousand Watt-hours)	Cost (\$)	Estimation	Green Power
<input type="checkbox"/>	<input type="text" value=""/>	<input type="text" value=""/>	<input type="text" value=""/>	<input type="checkbox"/>	<input type="checkbox"/>

Locating these values on your Ameren Missouri Bill

C: The energy you purchased from the grid

Usage Summary

<ul style="list-style-type: none"> Total kWh On-Peak kW Customer kWh to Utility Net Excess Gen kWh Total Billing Demand Winter Base Demand Base kWh (HUD) 	<ul style="list-style-type: none"> Peak kW Off-Peak kW Net Billable kWh Sec. Energy Block kW October Winter Base kW Base kWh Ratio Seasonal kWh (HUD)
--	--

A: The energy you generated onsite and exported to the grid

A: The energy you generated onsite and exported to the grid—**Customer kWh to Utility**

C: The energy you purchased from the grid—**Total kWh**